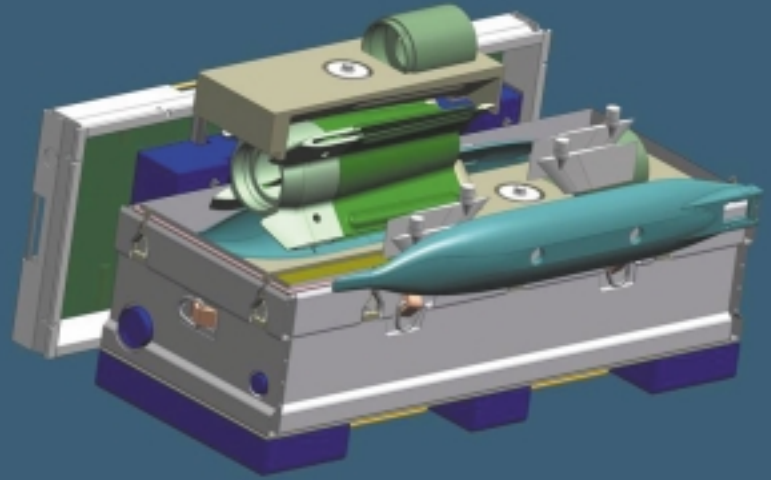


Design, Development and Test



With over 75 years experience in Mechanical Engineering, PA offers a complete engineering solution to ISO 9001:2000 standards from Design through Development, Test, Trials and Manufacture of the finished product. The Company's experienced and innovative DESIGN staff, supported by modern CAD equipment, provide a comprehensive Mechanical and Aerospace engineering design service. DEVELOPMENT of designs to production standards is a well honed skill. On site TEST facilities support the development programmes.

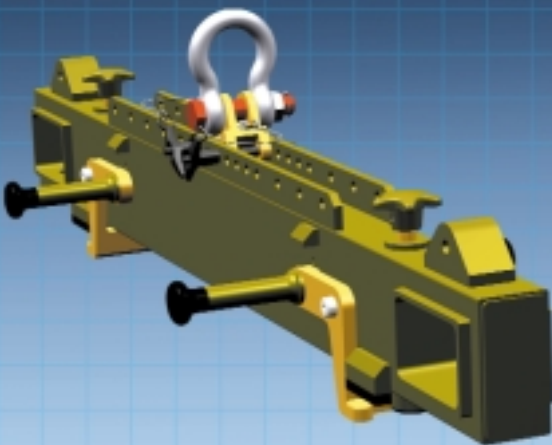
Design

The Design team have wide ranging experience in the design of light to medium mechanical engineering projects.

Recent design experience includes:

- Environmental containers for aircraft stores
- Weapon integration projects for military aircraft
- CBRN Protection Systems for buildings and mail handling
- Installation Kits for Viking and Warrior vehicles
- Handling equipment for heavy airborne stores

The Design Office operates 'Solid Edge' CAD software, with Femap Nx Nastran Finite Element Analysis and Fe Safe Fatigue Analysis Software running on a Windows 2003 network as part of the design engineering and risk reduction process.



Portsmouth Aviation

Design, Development and Test

Development

PA has a long history of developing complex systems to the very high standards demanded by the Ministry of Defence and major prime contractors. PA are currently providing significant support to Prime Contractors such as Raytheon, British Aerospace and SAAB on a number of major development programmes. The Company also has many years experience of undertaking the integration and clearance of stores for service on military aircraft.

We have considerable expertise and experience in the administration and conduct of trials, with skilled, in-house, trials staff. In our on-site Experimental Workshop, our highly skilled technicians manufacture prototypes and experimental equipment.

Test

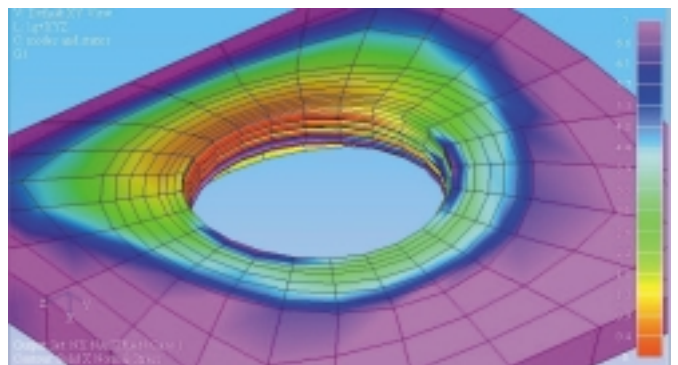
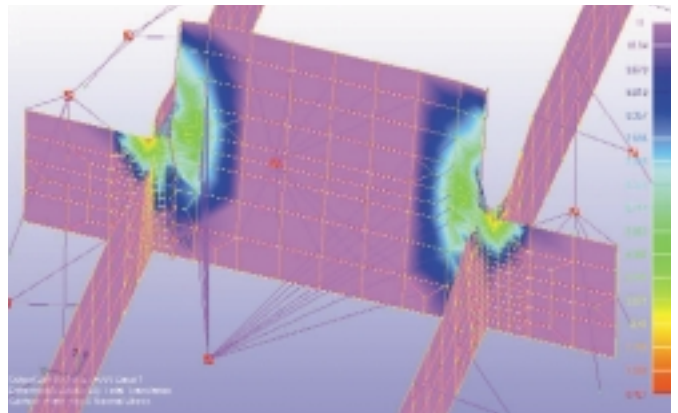
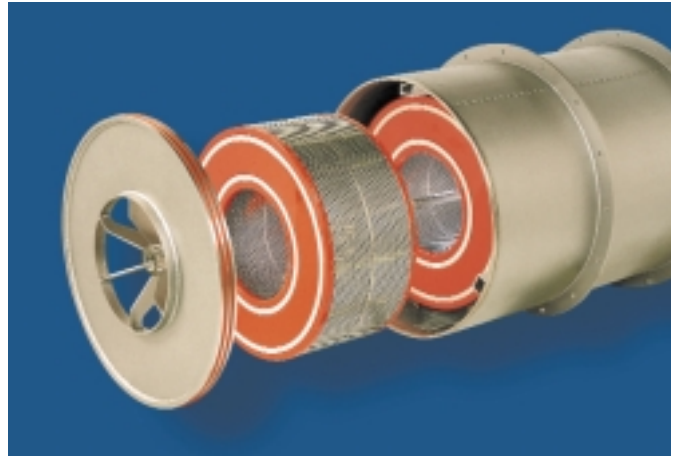
PA has wide ranging mechanical testing facilities. Central to these is a large Structural Test House capable of 30 tonne loads in compression and tension.

Other testing facilities include:

- Metallurgical Laboratory
- Material Test Laboratory
- CNC Co-ordinate Measuring Machine - capacity 1100 mm x 1500 mm x 750 mm
- Environmental Test Chamber - Capacity 1500 mm wide x 1500 mm deep x 2000 mm high. Temperature range -65 to +80 degrees C; rate of change 2 degrees C per minute average.

Post Design Services (PDS)

For many years, PA has administered Post Design Service contracts for the Ministry of Defence for both PA designed equipment and equipment designed by other companies. We currently administer over one hundred PDS contracts, holding the necessary drawings and designing modifications required by the customer.



Portsmouth Aviation Limited

Airport Service Road, Portsmouth, Hants. PO3 5PF United Kingdom

Telephone: +44 (0)23 9266 2251 Facsimile: +44 (0)23 9267 3690

E-mail: info@portav.co.uk www.portav.co.uk