

# Machining and Fabrication

**With over 75 years experience in mechanical engineering, PA offers a complete engineering solution to ISO 9001:2000 standard from Design through Development, Test, Trials and Manufacture of the finished product. The Company's comprehensive MACHINING AND FABRICATION facilities extend to almost 10,000 square metres of manufacturing space under one roof.**

## **Machining**

With modern CNC machinery supported by a large conventional machine shop and first class CNC measurement machines, we specialise in small and medium batch production. Machine capabilities include:

- CNC Turning Centres to 500 mm diameter
- CNC Machining Centres to a machining envelope of 1500 x 1000 x 600 mm
- Conventional Turning and Milling
- Grinding
- Routing

Our customers for machining work include:

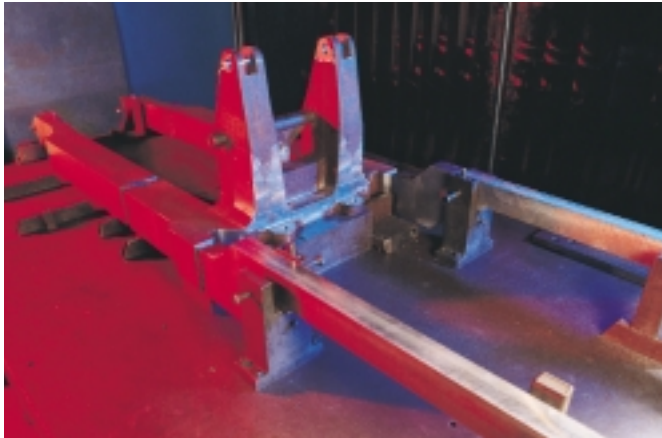
- The Ministry of Defence
- The Offshore Industry
- British Aerospace
- Raytheon
- GKN-WHL

Supported by Design Staff and with a total manufacturing capability which includes Metal Treatment, Finishing and Packaging, PA is able to offer a Machining and Fabrication service with the advantage of comprehensive back-up.



**Portsmouth Aviation**

## M a c h i n i n g   a n d   F a b r i c a t i o n



### Fabrication

PA has spacious fabrication and assembly facilities incorporating flame cutting welding, bending machines and presses.

### Welding

All welders are approved to British Standard EN 288 and submit test pieces on a regular basis. Processes include MIG and TIG, MMA, Resistance/Spot Welding and Induction Brazing/Soldering. PA also offer a comprehensive NDT facility including Dye Penetrant Magnetic Particle examination.

### Presses

Machinery in the Fabrication section includes:

- CNC Turret Punch Press
- Power Presses to 100 tonnes
- Brake Presses to 100 tonnes

### Measurement

A comprehensive suite of measuring and testing facilities is headed by a modern CNC Co-ordinate Measuring Machine. This IMS Merlin has a capacity of 1100 x 1500 x 750 mm.



### Portsmouth Aviation Limited

Airport Service Road, Portsmouth, Hants. PO3 5PF United Kingdom

Telephone: +44 (0)23 9266 2251 Facsimile: +44 (0)23 9267 3690

E-mail: [info@portav.co.uk](mailto:info@portav.co.uk) [www.portav.co.uk](http://www.portav.co.uk)